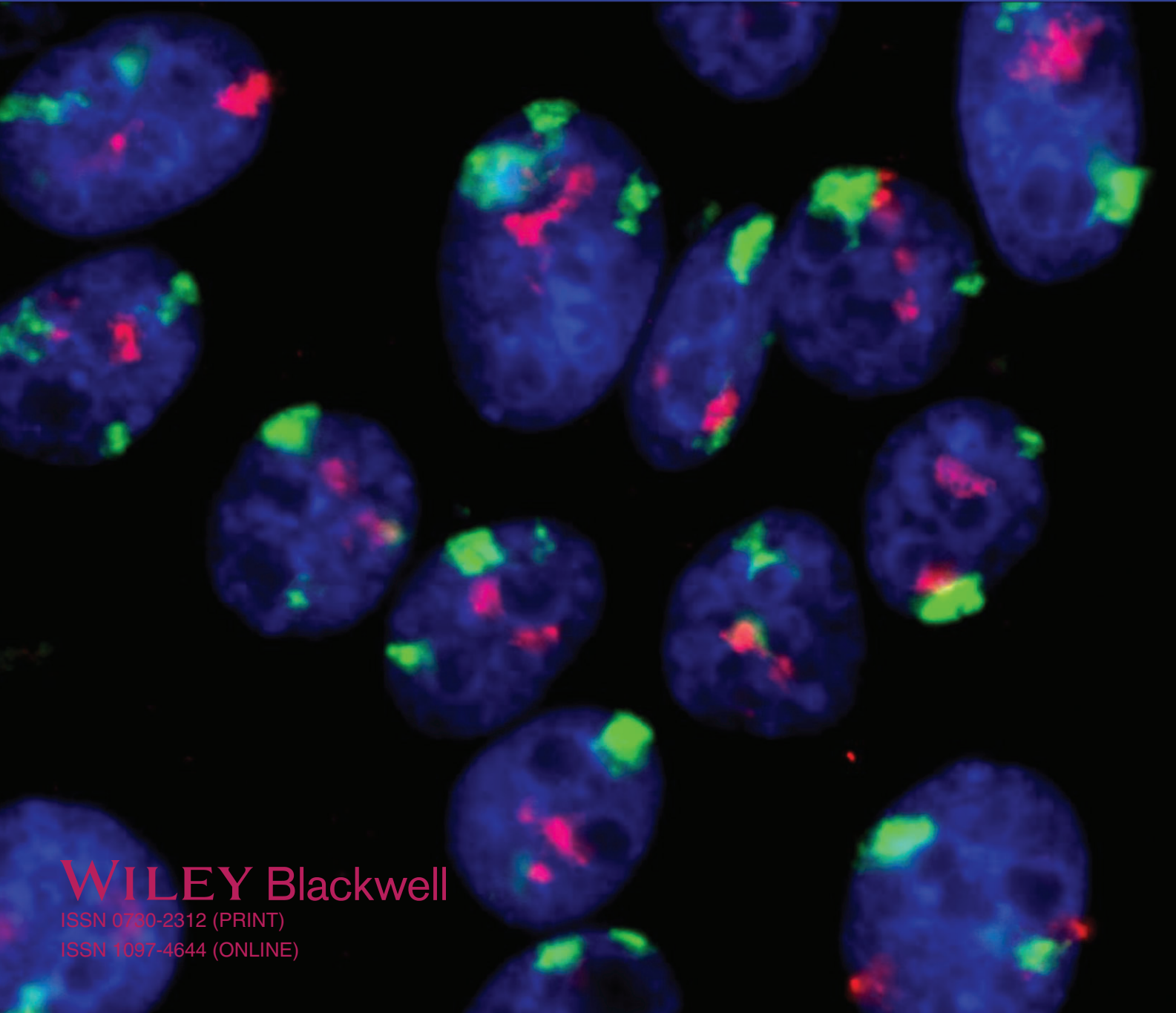


Volume 117 • Number 1

January 2016

Journal of Cellular Biochemistry

CHROMOSOME TERRITORIES



WILEY Blackwell

ISSN 0730-2312 (PRINT)

ISSN 1097-4644 (ONLINE)

SCOPE

The Journal of Cellular Biochemistry publishes descriptions of original research in which complex cellular, pathogenic, clinical, or animal model-systems are studied by biochemical, molecular, genetic or quantitative ultrastructural approaches. Submission of papers reporting genomic and proteomic approaches to identify and characterize parameters of biological control in a cellular context are encouraged. The areas covered include, but are not restricted to, conditions, agents, regulatory processes, or differentiation states that influence structure, cell cycle & growth control, structure-function relationships, or assembly mechanisms in cells, viruses, or supramolecular constructs, and signaling mechanisms mediating transcription. This scope extends to cell structure and function; organelle assembly; regulation of cell organization, reproduction or differentiation; stem cell biology, non-coding RNAs, the architectural organization and compartmentalization of nucleic acids and regulatory proteins within the nucleus and cytoplasm; the dynamics of intranuclear trafficking, placement and assembly of regulatory machinery for genetic and epigenetic control of gene expression; and to the development, organization or remodeling of tissues. Manuscripts are to be submitted to the Managing Editor.

Executive Editors:

C. Fred Fox

Department of Microbiology and Molecular Genetics
University of California
Los Angeles, CA 90095-1489
Telephone: (310) 825-9329
Fax: (310) 206-1703
E-mail: fredfox@microbio.ucla.edu

Gary S. Stein

Department of Biochemistry
The University of Vermont
Burlington, VT 05405
Telephone: (802) 656-6613
Fax: (802) 656-2140
E-mail: Gary.Stein@uvm.edu

Managing Editor: Nicholas Y. Thompson

E-mail: Nicholas.Thompson@med.uvm.edu

Max M. Burger, Emeritus

Field Editors:

Garth L. Nicolson

The Institute for Molecular Medicine
16371 Gothard Street H
Huntington Beach, CA 92647
E-mail: gnicolson@cox.net

W. Jackson Pledger

Gibbs Cancer Center and Research Institute
101 East Wood Street
Spartanburg, SC 29303
E-mail: pledger@gibbscc.org

CATEGORIES OF MANUSCRIPTS CONSIDERED FOR PUBLICATION

Articles are full-length papers presenting complete descriptions of original research which have not been published and are not being considered for publication elsewhere.

Fast Track articles are concise papers which present original timely research of exceptional significance and should make an important contribution to the field. Fast Track manuscripts must be concise: limited to 12 double spaced typed manuscript pages, a maximum of 35 references, and 4 items for the presentation of data (e.g. figures, tables, micrographs). Authors who wish to have their manuscript considered for publication in Fast Track should include a brief indication of reasons why the manuscript is suitable for "fast tracking" in their letter of transmittal. The names, addresses (including e-mail), telephone and fax numbers of five potential reviewers must also be provided in the transmittal letter. Fast Track manuscripts should be submitted to one of the Executive Editors.

Prospects are topical overviews on emerging areas of research. They summarize key problems, concepts, experimental approaches, and research opportunities which characterize a subject area. Prospects should not include previously unpublished research results. They are generally invited by the Editors; authors who wish to submit a Prospect should first consult with the Editors.

Viewpoints include news items, meeting summaries and announcements, book reviews and letters to the Editor. Submitted Viewpoints will be reviewed rapidly and appear in the next printed issue of the Journal.

INSTRUCTIONS FOR ARTICLE SUBMISSION

Journal of Cellular Biochemistry has a completely digital submission, review, and production process. We therefore ask for production-quality files at submission of your article. Following the guidelines below will expedite the processing, review, and publication of your article should it be accepted. Manuscripts submitted in incorrect formats will be returned for resubmission.

- Please submit your manuscript online at <http://mc.manuscriptcentral.com/jcb-wiley>.
- Click on "Check for Existing Account". If you do not already have an account, click on "Create an

Account". Be sure to enter **Keywords**.

- Follow instructions carefully. **Please review that your submission has uploaded correctly before clicking on the "Submit" button.**

- On completion of a successful submission, a confirmation screen with manuscript will appear and you will receive an e-mail confirming that the manuscript has been received by the Journal. If this does not happen, please check your submission. Contact jcb@med.uvm.edu for the editorial office or ts.mcsupport@thomson.com for ScholarOne Support if you require assistance.

Text

Submit your text in DOC or RTF format.

Do not embed figures or tables in this document; these should be submitted as separate files.

Tables

Tables should be created with a word processor and saved in either DOC or RTF format. Do not embed tables in your text.

Figures

To ensure the highest print quality, your figures must be submitted in TIF or EPS format according to the following minimum resolutions:

- 1200 dpi (dots per inch) for black and white line art (simple bar graphs, charts, etc.)
- 300 dpi for halftones (black and white photographs)
- 600 dpi for combination halftones (photographs that also contain line art such as labeling or thin lines)

Vector-based figures (e.g. figures created in Adobe Illustrator) should be submitted in EPS format.

Color Figures

In addition to the above resolution guidelines, color figures must be submitted in a CMYK colorspace. Do not submit color figures as RGB.

Unacceptable Figure Formats

Do not submit figures in any of the following formats: JPG, GIF, PSD, CRD, PCT, PPT, PDF, XLS, DOC, BMP, 123 (or other Lotus formats).

VIDEOS: Files should not be uploaded to the submission site, they should be sent to production in the event that the article is accepted.

Title Page must contain:

- Complete article title 16 words or less
- Names & affiliations (institutions) of all authors, with the corresponding author indicated by an asterisk.
- Institution(s) at which the work was performed with city & state. Affiliations must be listed at the departmental level. Each distinct affiliation should be listed as a separate entity, with a superscript number that links it to the individual author(s).
- Complete name, address, telephone number, fax number & e-mail address of corresponding author.
- A running head of not more than 45 characters, including spaces.
- Bullet point keywords (in bold).
- Total number of text figures & tables.
- All grant information should be provided in the following format: Contract grant sponsor: ___ ; Contract grant number: ___ .

Abstract: This should summarize the major findings and conclusions in the paper in not more than 250 words compressed into a single paragraph. The abstract should be intelligible without reference to the rest of the paper.

MATERIALS AND METHODS:

For all studies involving the use of animals, the following conditions should be met:

- a. All research animals must have been obtained and used in compliance with federal, state, and local laws and institutional regulations.
- b. The Journal recommends that animals be maintained in accordance with the guidelines of the NIH (Guide for the Care and Use of Laboratory Animals, 1996), the European Communities Council, or equivalent regulatory guidelines in other countries. Any veterinary accreditation should be noted in the manuscript.
- c. The author must have received permission from their

institutional Animal Care and Use Committee, and the manuscript must indicate that such approval was received.

LITERATURE CITED:

Reference should be made only to articles that are published or in press. Unpublished results and personal communications should be cited parenthetically in the text. Authors are responsible for the accuracy of the references. References in the text to the literature should be made by author's name followed by year of publication:

... studies by Briggs (1993) reveal ...
... studies by Briggs and Porter (1994) reveal ...
... an earlier report (Briggs, 1994) ...
... earlier reports (Briggs, 1993; Briggs and Porter, 1993, 1994) ...

If there are more than two authors, use the first author and et al. The final list must be alphabetized and include only references cited in the text. Each entry must include the names of all authors, complete title of the work cited, and inclusive page numbers. Abbreviations of journal titles should follow those used in Index Medicus.

Examples:

Journal Article:

Wright CD, Mülsh A, Busse R, Newman P. 1998. Generation of nitric oxide by human neutrophils. *Biochem Biophys Res Commun* 29:813–820.

Book Cited:

Whistler P, Wilks S. 1989. *Methods in carbohydrate chemistry*. New York: Academic Press. p.244

Book Chapter Cited:

Smith A. 1990. Transport of antigens: mechanisms and biological and regulatory consequences. In: Ariano MA, editor. *Biosynthesis of heme and chlorophylls*. New York: Wiley-Liss. p 230–278.

Legends: Each illustration must have a legend and be numbered consecutively with arabic numerals. Abbreviations pertaining to the labeling of figures should be listed once, alphabetically, and placed before the first figure containing these abbreviations.

Tables: Each table must be submitted as a separate file.

Illustrations: Use illustrations sparingly; they should not duplicate information already made clear in the text. All color figures will be reproduced in full color in the online edition of the journal at no cost to authors. Authors are requested to pay the cost of reproducing color figures in print (\$500 per page of color). Authors are encouraged to submit color illustrations that highlight the text and convey essential scientific information. For best reproduction, bright, clear colors should be used. Dark colors against a dark background do not reproduce well; please place your color images on a white background wherever possible. Please contact at jcbprod@wiley.com for further information. All graphics and lettering must be legible after reduction in size. Illustrations must be numbered in order of appearance with roman numerals and keyed into the text.

Conflict Interests: Potential financial interests must be disclosed to the Editors in the cover letter. Funding sources supporting the work should also be cited. Authors must disclose commercial considerations, such as an equity interest, patent rights, or corporate affiliations, including consultancies, for any product or process mentioned in the submission. This information will be acknowledged at publication in a format agreeable to both the Editor and the responsible author. Rejection of the manuscript or retraction may occur if undisclosed financial interests are found after publication.

Supplementary Online Material: Authors may submit supplementary material for their articles to be posted in the electronic version of the journal. There are no restrictions on file types, however please keep in mind that the more universal the file type the more accessible it will be to the community. All supplementary material must be submitted online as "Supplementary Material" for peer review.

Electronic Submission Questions?

E-mail: jcbprod@wiley.com
Fax: 201-748-7670

EXECUTIVE EDITORS *In the United States*

C. Fred Fox
Los Angeles, CA

Gary S. Stein
Burlington, VT

In Europe

Max M. Burger, Emeritus

REGIONAL EDITOR
Zhengjun Chen
Shanghai, China

FIELD EDITORS
Garth L. Nicolson
Huntington Beach, CA

W. Jackson Pledger
Spartanburg, SC

BENCHMARK EDITORS
Mark F. Evans
Burlington, VT

Alan Howe
Burlington, VT

Scott Tighe
Burlington, VT

MANAGING EDITOR
Nicholas Y. Thompson
Burlington, VT

EDITORIAL BOARD

Jane Aubin

Rami I. Aqeilan

Mihir Bagchi

Zvi Bar-Shavit

Jacob Bar-Tana

Avri Ben-Ze'ev

Ronald Berezney

Mina J. Bissell

Christopher Berger

Mikhail Blagosklonny

Ellen C. Breen

Robert C. Briggs

Ralph Buttyan

Kathleen
Brummel-Ziedins

Judith Campisi

Michele Caraglia

Kermit L. Carraway

Moses V. Chao

Di Chen

Jen-Fu Chiu

Lucio Cocco

Carlo M. Croce

Dennis D. Cunningham

Michael P. Czech

James R. Davie

Benoit De Crombrughe

David Denhardt

Edward A. Dennis

Rik Derynck

M. Hicham Drissi

John Eisman

Marilynn E. Etzler

Charles H. Evans

Ten Feizi

Carl M. Feldherr

Richard Firtel

Baruch Frenkel

Benjamin Geiger

Robert H. Getzenberg

Antonio Giordano

Ira D. Goldfine

Jonathan A.R. Gordon

Stephen Hann

Curtis C. Harris

Mary E. Hatten

Mohammad Hassan

Mark R. Haussler

Norman B. Hecht

Mary J.C. Hendrix

Brian Herman

Harvey Herschman

Scott Hiebert

Tony Hunter

Anthony Imbalzano

Maria Imschenetzky

Yoshiaki Ito

Samson T. Jacob

Gary R. Jacobson

Amjad Javed

Jean-François Bodart

Gary L. Johnson

Peter Jones

Gerard Karsenty

Evan T. Keller

Michael Klagsbrun

Kendall Knight

Barry Komm

Timothy F. Kowalik

Barbara Kream

Lucia R. Languino

Jeanne Lawrence

Yvonne Lefebvre

Jane B. Lian

Marc E. Lippman

Mai X. Luong

Elizabeth J. Luna

Dario Marchetti

Laura McCabe

Lucio Miele

Suresh Mohla

Denis Monard

Martin Montecino

Ruth J. Muschel

Scott Morrill

Ellis Neufeld

Marit Nilsen-Hamilton

Masaki Noda

Anthony W. Norman

Nicola Normanno

Athanasios G.
Papavassiliou

Tony Passaniti

Sheldon Penman

Jitesh Pratap

Francesco Ramirez

Prem Reddy

Phillips W. Robbins

Alonzo H. Ross

E. Helene Sage

Milton H. Saier

Alan R. Saltiel

Edward Seto

Justin Silver

Robert H. Singer

Michael B. Small

Kelly P. Smith

Gail E. Sonenshein

Kenneth Soprano

Thomas C. Spelsberg

Eric J. Stanbridge

E. Richard Stanley

Janet L. Stein

Donald F. Steiner

F. Marc Stewart

Tatsuo Suda

Jason Stumpff

Marvin L. Tanzer

Steven L. Teitelbaum

Jean-Paul Thiery

Claire Verschraegen

Coralee Tye

Roel Van Driel

André J. van Wijnen

Brigitte van Zundert

Inder K. Vijay

Klaus von der Mark

D. Martin Watterson

Ralf Weiskirchen

Sherman Weissman

Jennifer J. Westendorf

Thomas N. Wight

Karel W.A. Wirtz

George B. Witman

Ren-He Xu

Sayyed K. Zaidi

Gerard Zambetti

Bruce R. Zetter

Hong Zhang

Copyright © 2015 Wiley Periodicals, Inc. All rights reserved. No part of this publication may be reproduced, stored or transmitted in any form or by any means without the prior permission in writing from the copyright holder. Authorization to photocopy items for internal and personal use is granted by the copyright holder for libraries and other users registered with their local Reproduction Rights Organisation (RRO), e.g. Copyright Clearance Center (CCC), 222 Rosewood Drive, Danvers, MA 01923, USA (www.copyright.com), provided the appropriate fee is paid directly to the RRO. This consent does not extend to other kinds of copying such as copying for general distribution, for advertising or promotional purposes, for creating new collective works or for resale. Special requests should be addressed to: permissions@wiley.com. JOURNAL OF CELLULAR BIOCHEMISTRY (ISSN 0730-2312 [print]; 1097-4644 [online]), is published monthly by Wiley Periodicals, Inc., through Wiley Subscription Services, Inc., 111 River St., Hoboken, NJ 07030-5774. Postmaster: Send all address changes to JOURNAL OF CELLULAR BIOCHEMISTRY, Journal Customer Services, John Wiley & Sons Inc., 350 Main St., Malden, MA 02148-5020. Change of Address: Please forward current mailing label to the address given above six weeks prior to move. Information for subscribers: JOURNAL OF CELLULAR BIOCHEMISTRY is published in 12 issues per year. Institutional subscription prices for 2015 are: Print & Online: \$16,160 (US), \$16,570 (Rest of World), €10,694 (Europe), £8,457 (UK). Prices are exclusive of tax. Asia-Pacific GST, Canadian GST and European VAT will be applied at the appropriate rates. For more information on current tax rates, please go to www.wileyonlinelibrary.com/tax-vat. The price includes online access to the current and all online back files to January 1st 2011, where available. For other pricing options, including access information and terms and conditions, please visit www.wileyonlinelibrary.com/access. Delivery Terms and Legal Title: Where the subscription price includes print issues and delivery is to the recipient's address, delivery terms are Delivered at Place (DAP); the recipient is responsible for paying any import duty or taxes. Title to all issues transfers FOB our shipping point, freight prepaid. We will endeavour to fulfil claims for missing or damaged copies within six months of publication, within our reasonable discretion and subject to availability. View this journal online at wileyonlinelibrary.com/journal/JCB. The journal to which you are submitting your manuscript employs a plagiarism detection system. By submitting your manuscript to this journal you accept that your manuscript may be screened for plagiarism against previously published works. For submission instructions, subscription and all other information visit: wileyonlinelibrary.com/journal/JCB; production questions may be directed to jcbprod@wiley.com. Journal of Cellular Biochemistry accepts articles for Open Access publication. Please visit <http://olabout.wiley.com/WileyCDA/Section/id-406241.html> for further information about OnlineOpen. Back issues: Single issues from current and prior year volumes are available at the current single issue price from cs-journals@wiley.com. Earlier issues may be obtained from Periodicals Service Company, 351 Fairview Avenue - Ste 300, Hudson, NY 12534, USA. Tel: +1 518 822-9300. Fax: +1 518 822-9305. Email: psc@periodicals.com. Commercial Reprints: Email: corporatesalesusa@wiley.com; corporatesalesaustralia@wiley.com. Author Reprints (50-500 copies): <https://caesar.sheridan.com/reprints/redis.php?pub=10089&acro=JCB>; Email: cjones@tsp.sheridan.com. Advertising Sales: Inquiries regarding advertising should be forwarded to Advertising Sales Manager, Joe Tomaszewski (jtomaszewski@wiley.com). Journal Customer Services: For ordering information, claims and any enquiry concerning your journal subscription please go to www.wileycustomerhelp.com/ask or contact your nearest office. Americas: Email: cs-journals@wiley.com; Tel: +1 781 388 8598 or +1 800 835 6770 (toll free in the USA & Canada). Europe, Middle East and Africa: Email: cs-journals@wiley.com; Tel: +44 (0) 1865 778315. Asia Pacific: Email: cs-journals@wiley.com; Tel: +65 6511 8000. Japan: For Japanese speaking support, Email: cs-japan@wiley.com; Tel: +65 6511 8010 or Tel (toll-free): 005 316 50 480. Visit our Online Customer Help available in 7 languages at www.wileycustomerhelp.com/ask. Disclaimer: The Publisher and Editors cannot be held responsible for errors or any consequences arising from the use of information contained in this journal; the views and opinions expressed do not necessarily reflect those of the Publisher and Editors, neither does the publication of advertisements constitute any endorsement by the Publisher and Editors of the products advertised. Wiley's Corporate Citizenship initiative seeks to address the environmental, social, economic, and ethical challenges faced by our business and which are important to our diverse stakeholder groups. Since launching the initiative, we have focused on sharing our content with those in need, enhancing community philanthropy, reducing our carbon impact, creating global guidelines and best practices for paper use, establishing a vendor code of ethics, and engaging our colleagues and other stakeholders in our efforts. Follow our progress at www.wiley.com/go/citizenship. Indexed by: BIOBASE • Biochemistry & Biophysics Citation Index™ • Biological Abstracts® • BIOSIS Previews® • CAB Abstracts® • Cambridge Scientific Abstracts • Chemical Abstracts Service/SciFinder • CSA Biological Sciences Database • Current Awareness in Biological Sciences • Current Contents®/Life.